

HANCE 2000 LED Spotlight 3 Circuit / 1 Neutral 120V Line Voltage Track

FEATURES:

- Designed in Spain; Assembled in the USA
- Cast aluminum housing provides thermal management
- Integral driver eliminates the need for an external driver box or remote transformer
- Form fitting curved stem is designed to be an integral part of the housing for use as a downlight
- Friction/Locking with 90° tilt and 355° orientation
- Accepts two optical accessories
- Flush adapter provides low voltage aesthetics in line voltage track



PROJECT NAME


TYPE

CATALOG NAME

DATE



Specifications

HOUSING	2 piece cast aluminum construction			
LUMINAIRE FINISH	Textured White (RAL 9010)			
	Graphite (RAL 9011)			
TRACK ADAPTER	120V 3 Circuit / 1 (shared) Neutral			
INPUT WATTS	SS	13 watts		
	SP/MF/FL	18 watts		
CERTIFICATION	CSA / US certified for Dry Locations for the USA 			
PROTECTION LEVEL	IP20			
WEIGHT	1.43 lbs 650g			
COLOR RENDERING INDEX	RA > 90 3 SDCM			
R9 VALUE	60			
CHROMATICITY	Center point of Ellipse	CCT	X	Y
		2700	0.4577	0.4099
		3000	0.4338	0.4030
		3500	0.4073	0.3917
		4000	0.3818	0.3797
LUMEN MAINTENANCE	L70 50,000 Hrs			
OPTICS	SS	Total Internal Reflector Lens		
	SP/MF/FL	Faceted Aluminum Anodized Reflector		
EFFICACY	SS	64 - 68 lumens/watt		
	SP/MF/FL	82 - 96 lumens/watt		
PERFORMANCE (3000K)	Beam	Degrees	CBCP	Efficacy
	SuperSpot	10	16,311	68 lm/w
	Spot	16	8,935	90 lm/w
	Med Flood	24	5,707	91 lm/w
	Flood	36	3,007	84 lm/w

Description

The HANCE 2000 series track mounted spotlight is part of the Hance family, offering a variety of sizes and source lumen packages from 1000 up to 4000 lumens. Assorted reflectors, lenses, and accessories provide optical flexibility. It is available in 90CRI with color temperatures of 2700K, 3000K, 3500K, or 4000K, as well as different aperture angles for super-spot, spot, medium flood, and flood distributions.

The Super-Spot 10° beam is achieved using a total internal reflection (TIR) lens, providing minimal spill light. Spot (17°), medium flood (24°), and flood (36°) beams utilize faceted exchangeable reflectors. HANCE includes an array of optional accessories including films for softening or elliptical beam shaping, hexcell louvers, and deco rings.

HANCE was designed to provide minimal visual impact by integrating the driver into a single unit, eliminating the need for a separate driver enclosure. The cast aluminum housing additionally acts to provide thermal management for the LED. The contoured swivel arm allows the stem to become an integral part of the spotlight when used as a downlight.

The body is available in textured black or textured white finishes with decorative rings that hold the reflector and accessories. The decorative rings are available in four finishes: copper, silver, textured black and textured white.

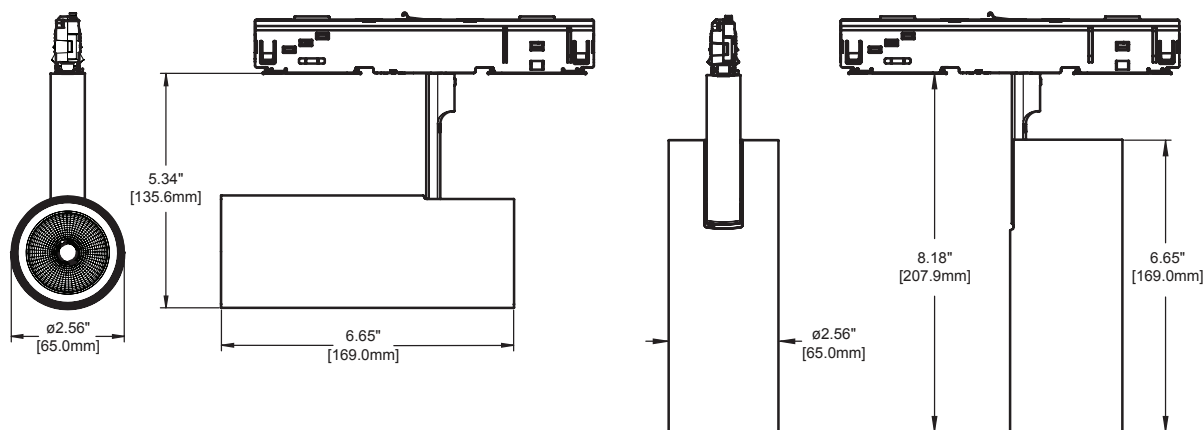


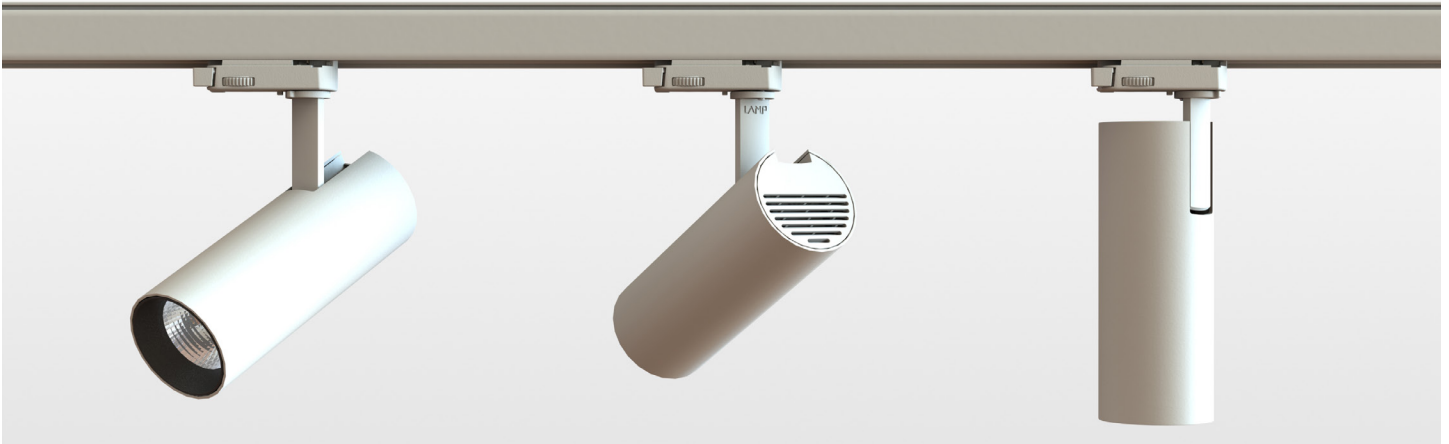


Ordering - Track Spotlight - 3 Circuit - 1 Neutral Flush Adapter - 120V

H2			120			
SERIES	CCT / CRI	OPTICS	VOLTAGE	ADAPTER	DRIVER	FINISH
H2 Hance 2000	927 (90 CRI, 2700K)	SS (super spot 10°)	ADAPTER WITHOUT DATA CONDUCTORS		ND (non-dim)	WH (white RAL 9010)
	930 (90 CRI, 3000K)	SP (spot 16°)	120 (120 volt)	SF3 (3 circuit - 1 neutral)		BL (black RAL 9011)
	935 (90 CRI, 3500K)	MF (medium flood 24°)	ADAPTER WITH DATA CONDUCTORS		DA (analog 0-10V)	
	940 (90 CRI, 4000K)	FL (flood 36°)	120 (120 volt)	SFC3 (3 circuit - 1 neutral)		

Dimensions

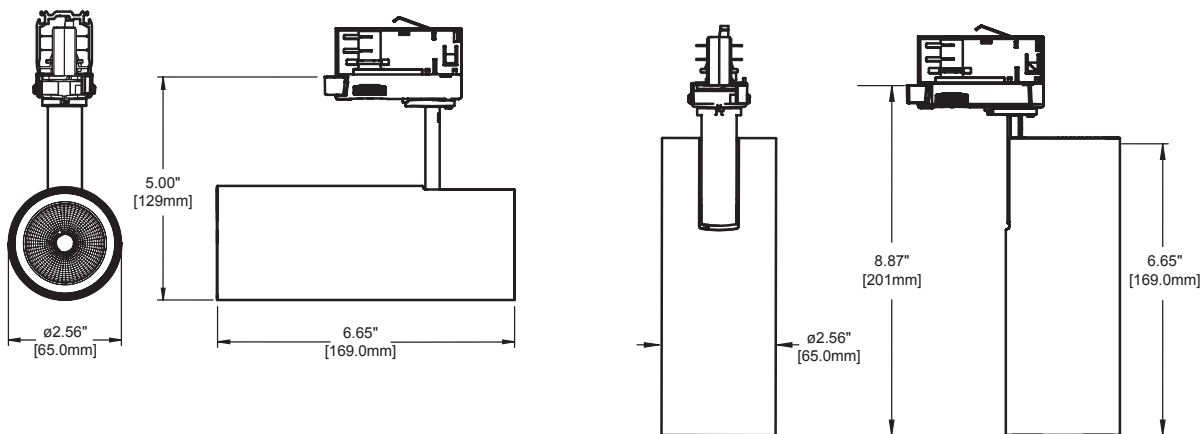




Ordering - Track Spotlight - 3 Circuit - 1 Neutral - 120V

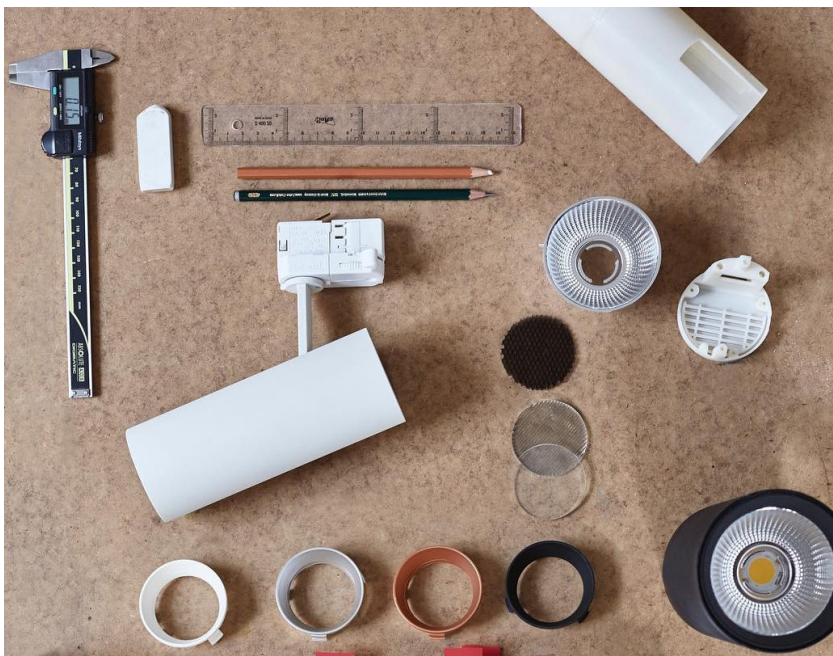
H2			120	ST3	ND	
SERIES	CCT / CRI	REFLECTOR	VOLTAGE	TRACK ADAPTER	DRIVER	FINISH
H2 Hance 2000	927 (90 CRI, 2700K)	SS (super spot 10°)	120 (120 volt)	ST3 (3 circuit - 1 neutral)	ND (non-dim)	WH (white RAL 9010)
	930 (90 CRI, 3000K)	SP (spot 16°)				BL (black RAL 9011)
	935 (90 CRI, 3500K)	MF (medium flood 24°)				
	940 (90 CRI, 4000K)	FL (flood 36°)				

Dimensions



Ordering - Accessories

OPTICAL	REFLECTORS	DECO RINGS
HSSL50 (soft lens film)	HSR50SP (spot 160)	HSD65BK (black)
HSEL50 (elliptical lens film)	HSR50MF (medium flood 240)	HSD65WH (white)
HSHO50 (hexcel louver)	HSR50FL (flood 360)	HSD65SV (silver)
HSTR50 (clear lens)		HSD65CP (copper)



Dimming

CODE	ADAPTER	WIRING	CONTROL TYPE	DIMMING CURVE	DIM LEVEL
ND	ALL	2 wire	None	N/A	100%
DA	SFC3	4 wire	Analog 0-10V	Linear	≥1%



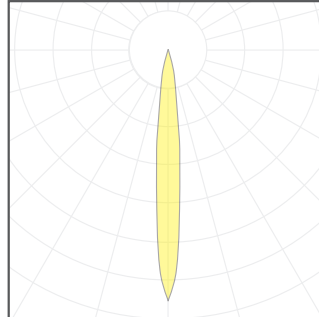
Photometrics

Super Spot

H2-930-SS	90CRI	3000K
Center Beam Candlepower	16,311	
Beam (Degrees)	9.9	
Lumen Output	880	

Proration Factors

CCT	MF
2700K	0.93
3000K	1.00
3500K	1.00
4000K	1.00



H2-930-SS

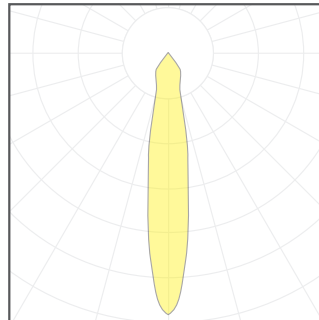
Feet		Footcandles	
Distance	Dia	Center	Edge
4	1.4	1019	495
6	2.1	453	220
8	2.8	255	124
10	3.5	163	79
12	4.2	113	55
14	4.9	83	40
16	5.6	64	31
18	6.3	50	24
20	7.0	0	0

Spot

H2-930-SP	90CRI	3000K
Center Beam Candlepower	8,934	
Beam (Degrees)	16.5	
Lumen Output	1,613	

Proration Factors

CCT	MF
2700K	0.96
3000K	1.00
3500K	1.01
4000K	1.03



H2-930-SP

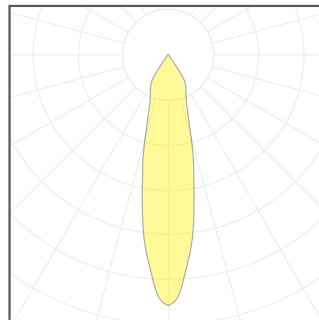
Feet		Footcandles	
Distance	Dia	Center	Edge
4	2.4	558	257
6	3.6	248	114
8	1.7	140	64
10	5.9	89	41
12	7.1	62	29
14	8.3	46	21
16	9.5	35	16
18	10.7	28	13
20	11.8	22	10

Medium Flood

H2-930-MF	90CRI	3000K
Center Beam Candlepower	5,707	
Beam (Degrees)	23.8	
Lumen Output	1,650	

Proration Factors

CCT	MF
2700K	0.96
3000K	1.00
3500K	1.01
4000K	1.03



H2-930-MF

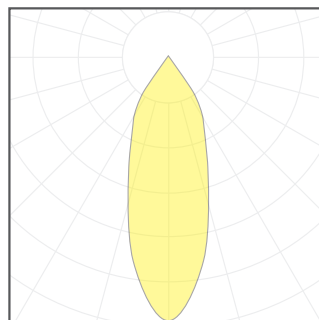
Feet		Footcandles	
Distance	Dia	Center	Edge
4	3.5	357	149
6	5.3	159	66
8	7.1	89	37
10	8.8	57	24
12	10.6	40	17
14	12.3	29	12
16	14.1	22	9
18	15.9	18	7
20	17.6	14	6

Flood

H2-930-FL	90CRI	3000K
Center Beam Candlepower	3,007	
Beam (Degrees)	35.8	
Lumen Output	1,508	

Proration Factors

CCT	MF
2700K	0.96
3000K	1.00
3500K	1.01
4000K	1.03



H2-930-FL

Feet		Footcandles	
Distance	Dia	Center	Edge
4	5.8	188	62
6	8.7	84	27
8	11.5	47	15
10	14.4	30	10
12	17.3	21	7
14	20.2	15	5
16	23.1	12	4
18	26.0	9	3
20	28.8	8	2



www.nordeon-usa.com

In a continuing effort to offer the best product possible, we reserve the right to change, without notice, specifications or materials.
Technical specification sheets that appear on www.nordeon-usa.com are the most recent data available.