

HANCE 3000 LED Spotlight 2 Circuit / 2 Neutral Line Voltage Track

FEATURES:

- Designed in Spain; Assembled in the USA
- Cast aluminum housing provides thermal management
- Integral driver eliminates the need for an external driver box or remote transformer
- Form fitting curved stem is designed to be an integral part of the housing for use as a downlight
- Friction / Locking with 90° tilt and 355° orientation
- Accepts two optical accessories
- Track adaptor allows for 2 circuits with separate neutrals for Forward Phase or Reverse Phase dimming



PROJECT NAME


TYPE

CATALOG NAME

DATE



Specifications

HOUSING	2 piece cast aluminum construction			
LUMINAIRE FINISH	Textured White (RAL 9010)			
	Graphite (RAL 9011)			
TRACK ADAPTER	120V or 277V 2 Circuit / 2 Neutral			
INPUT WATTS	SP/MF/FL	25.1 watts		
CERTIFICATION	CSA / US certified for Dry Locations 			
PROTECTION LEVEL	IP20			
WEIGHT	2.97 lbs 1350g			
COLOR RENDERING INDEX	RA > 90 3 SDCM			
R9 VALUE	60			
CHROMATICITY	Center point of Ellipse	CCT	X	Y
		2700	0.4577	0.4099
		3000	0.4338	0.4030
		3500	0.4073	0.3917
		4000	0.3818	0.3797
LUMEN MAINTENANCE	L70 50,000 Hrs			
OPTICS	SP/MF/FL	Faceted Aluminum Anodized Reflector		
EFFICACY	SP/MF/FL	100 - 112 lumens/watt		
PERFORMANCE (3000K)	Beam	Degrees	CBCP	Efficacy
	Spot	16.2	19,335	104 lm/w
	Med Flood	23.5	12,048	108 lm/w
	Flood	31.7	7,489	106 lm/w

Description

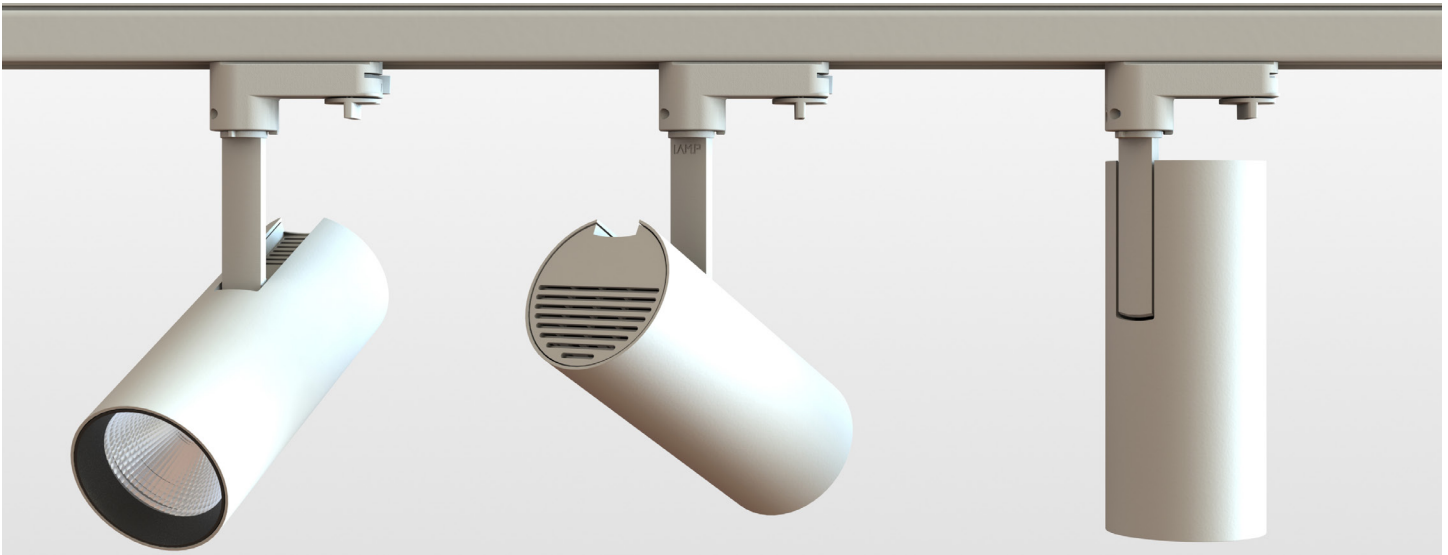
The HANCE 3000 series track mounted spotlight is part of the Hance family, offering a variety of sizes and source lumen packages from 1000 up to 4000 lumens. Assorted reflectors, lenses, and accessories provide optical flexibility. It is available in 90CRI with color temperatures of 2700K, 3000K, 3500K, or 4000K, as well as different aperture angles for super-spot, spot, medium flood, and flood distributions.

Faceted exchangeable reflectors provide Spot (17°), medium flood (24°), and flood (36°) distributions. A SuperSpot (10°) optic providing minimal spill light is available with the Hance 2000. HANCE includes an array of optional accessories including films for softening or elliptical beam shaping, hexcell louvers, and deco rings.

HANCE was designed to provide minimal visual impact by integrating the driver into a single unit, eliminating the need for a separate driver enclosure. The cast aluminum housing additionally acts to provide thermal management for the LED. The contoured swivel arm allows the stem to become an integral part of the spotlight when used as a downlight.

The body is available in textured black or textured white finishes with decorative rings that hold the reflector and accessories. The decorative rings are available in four finishes: copper, silver, textured black and textured white.

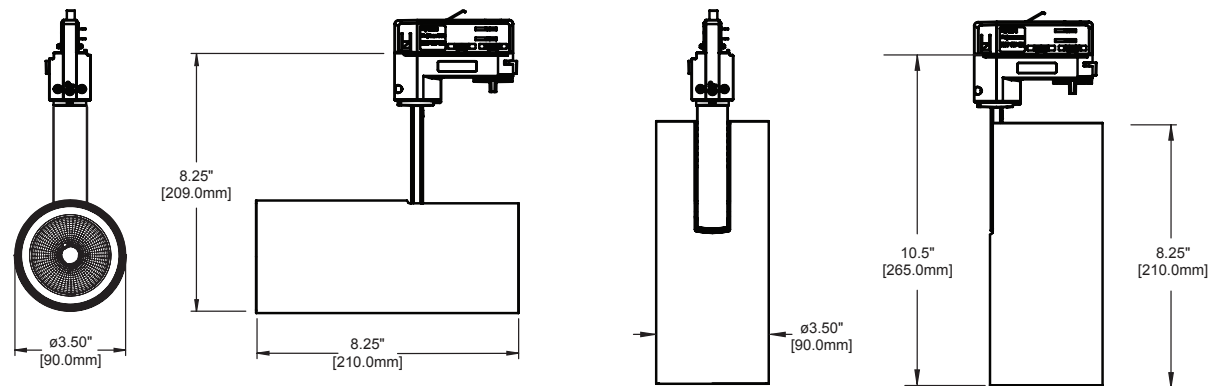




Ordering - Track Spotlight - 2 Circuit - 2 Neutral Adapter

H3		120				
SERIES	CCT / CRI	OPTICS	VOLTAGE	ADAPTER	DRIVER	FINISH
H3 Hance 3000	927 (90 CRI, 2700K)	SP (spot 16°)	ADAPTER WITHOUT DATA CONDUCTORS			
	930 (90 CRI, 3000K)	MF (medium flood 24°)	120 (120 volt)	ST2 (2 circuit)	ND (non-dim)	WH (white RAL 9010)
	935 (90 CRI, 3500K)	FL (flood 36°)	277 (277 volt)		D2 (Triac / ELV - 120V Only)	BL (black RAL 9011)
	940 (90 CRI, 4000K)		ADAPTER WITH DATA CONDUCTORS			
			120 (120 volt)	STC2 (2 circuit control)	DA (analog 0-10V)	
			277 (277 volt)			

Dimensions





HSSL75
(soft lens film)

HSEL75
(elliptical lens film)

HSHO75
(hexcel louver)

HSTR75
(clear lens)

HSR75SP
(spot | 160)

HSR75MF
(medium flood | 240)

HSR75FL
(flood | 360)

HSRI90B
(black)

HSRI90W
(white)

HSRI90M
(silver)

HSRI90C
(copper)

 Dimming

CODE	ADAPTER	TRACK	CONTROL TYPE	DIMMING CURVE	DIM LEVEL
ND	ALL	ALL	None	N/A	100%
D2	ST2	2 Circuit / 2 Neutral (120V only)	Triac Forward Phase	Linear	≥1%
D2	ST2	2 Circuit / 2 Neutral (120V only)	ELV Reverse Phase	Linear	≥1%
DA	STC2	2 Circuit / 2 Neutral w/ Data	Analog 0-10V	Linear	≥1%



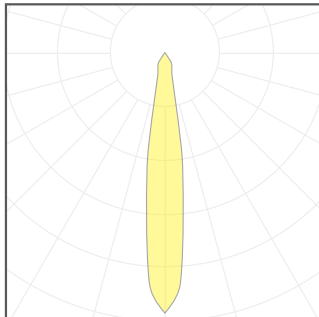
Photometrics

Spot

H3-930-SP	90CRI	3000K
Center Beam Candlepower		19,335
Beam (Degrees)		16.2
Lumen Output		2,622

Proration Factors

CCT	MF
2700K	0.96
3000K	1.00
3500K	1.01
4000K	1.06



H3-930-SP

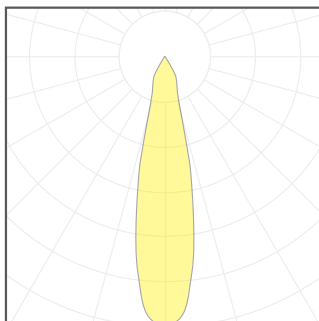
Feet		Footcandles	
Distance	Dia	Center	Edge
4	2.3	1208	557
6	3.5	537	248
8	4.6	302	139
10	5.8	193	89
12	7.0	134	62
14	8.1	99	45
16	9.3	76	35
18	10.5	60	28
20	11.6	48	22

Medium Flood

H3-930-MF	90CRI	3000K
Center Beam Candlepower		12,048
Beam (Degrees)		23.5
Lumen Output		2,713

Proration Factors

CCT	MF
2700K	0.96
3000K	1.00
3500K	1.01
4000K	1.06



H3-930-MF

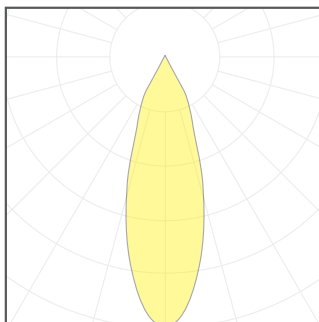
Feet		Footcandles	
Distance	Dia	Center	Edge
4	3.5	753	317
6	5.2	335	141
8	7.0	188	79
10	8.7	120	51
12	10.4	84	35
14	12.2	61	26
16	13.9	47	20
18	15.7	37	16
20	17.4	30	13

Flood

H3-930-FL	90CRI	3000K
Center Beam Candlepower		7,489
Beam (Degrees)		31.7
Lumen Output		2,660

Proration Factors

CCT	MF
2700K	0.96
3000K	1.00
3500K	1.01
4000K	1.06



H3-930-FL

Feet		Footcandles	
Distance	Dia	Center	Edge
4	4.9	468	169
6	7.4	208	75
8	9.9	117	42
10	12.4	75	27
12	14.8	52	19
14	17.3	38	14
16	19.8	29	11
18	22.2	23	8
20	24.7	19	7



www.nordeon-usa.com

In a continuing effort to offer the best product possible, we reserve the right to change, without notice, specifications or materials.
Technical specification sheets that appear on www.nordeon-usa.com are the most recent data available.